



STE6300



STE6300 RF SHIELDED TEST ENCLOSURE

(NO OPTIONS INCLUDED, Fully customizable to your requirements)

- Designed for a wide variety of RF testing, function/s determined by user customization.
- Perfect for 802.11a, b, g, n, ac, and ax
- Wireless device testing
- Bluetooth, RFID, 3G, 4G, 5G testing
- Totally customizable with a wide variety of I/O options available

The STE6300 is a blank enclosure ready to be customized to match your specific RF testing requirements. Our Engineering team is available to assist you to make sure your custom enclosure is designed to meet your unique RF testing requirements. This enclosure is incorporated with 120mm passive ventilation system with optional 12 volt DC, 115 VAC, or 230VAC fans available. As with all of our enclosures, your custom I/O configuration is brought out to a precision machined I/O panel, giving you off the shelf delivery of your custom order.



Concentric Technology Solutions Inc

Solutions for the Wireless Industry



Features:

- Designed for WLAN testing
- Front loading swing away door
- Exclusive double lip RF tight gasket
- Universal I/O connector interface plate
- Insertion Loss RF absorbent foam liner Standard
- Reflection Loss solutions available
- Optional security locking latch available

Isolation (**Base Enclosure**, may vary depending on I/O or options selected in final configuration):

- >95dB To 3GHz
- >90dB To 6GHz

I/O Connectors:

- None provided standard, customized to your specific requirements.
- See options for off the shelf connectors/interfaces available.
- Coaxial connectors: SMA, BNC, TNC, N, N to SMA, etc..
- Digital interfaces: USB, Ethernet, Video, Serial, Audio, Fiber, etc..
- Power filter interface: AC and DC
- Power Strip Options: US, UK, European, France, Swiss, Italy, Israel, India, China, Australia, Multi Country Config, etc...
- Custom connection options can be sourced through our Engineering Team.

Dimensions/Weight includes 3/4" Foam (**Base Enclosure**, may vary depending on I/O or options selected in final configuration) :

Exterior: 20.6"H x 36.0"W x 24.0"D ·

Interior: 18.6"H x 34.3"W x 22.3"D ·

Weight: 95lbs.

(MUST SHIP ON A PALLET with a total weight of 115 lbs.)

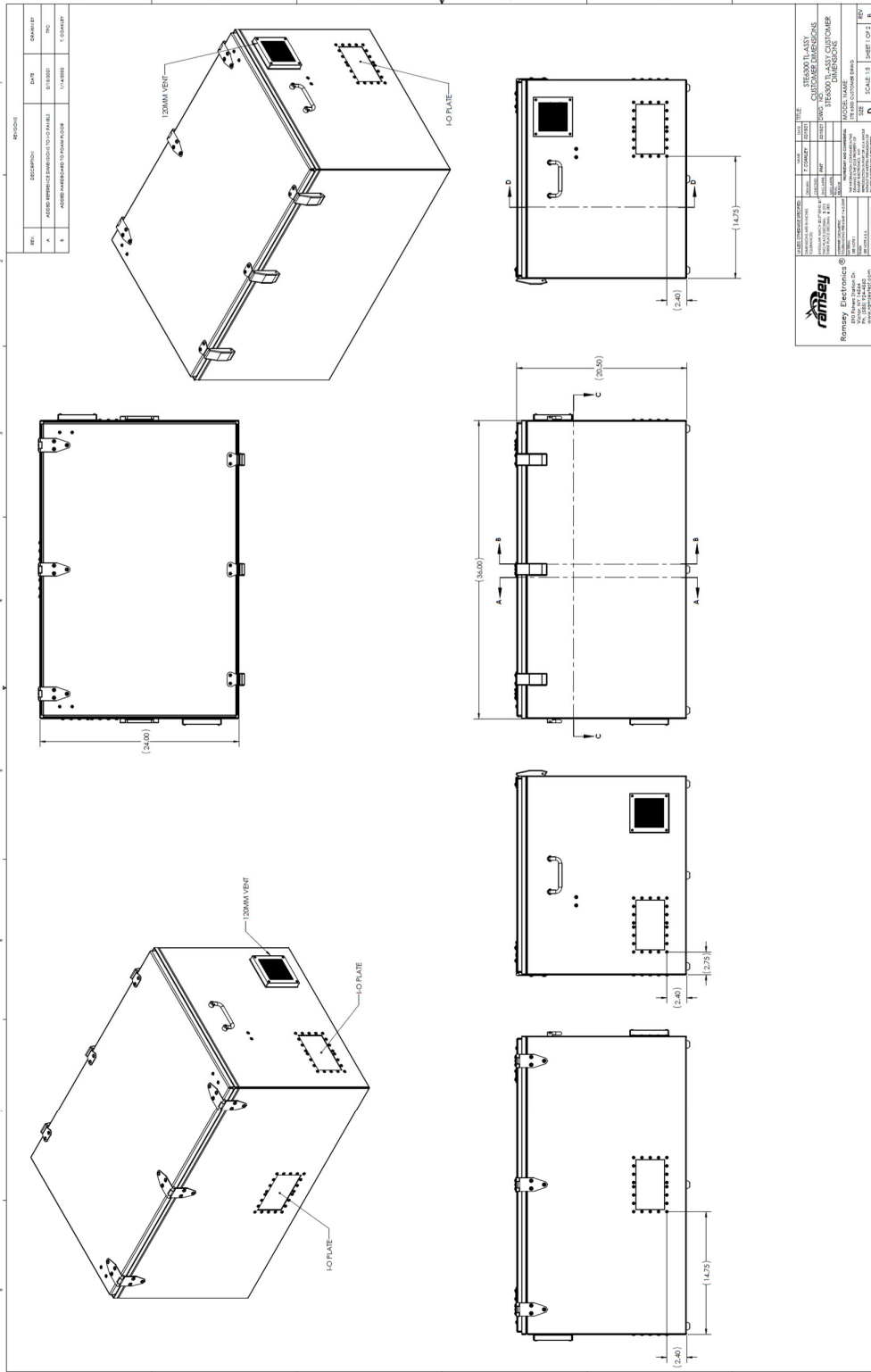
Concentric Technology Solutions, Inc.

TEL: 817-503-8862 FAX: 817-503-8866 Email: CTS-Sales@ctscorp-usa.com www.rfshieldbox.com www.ctscorp-usa.com



Concentric Technology Solutions Inc

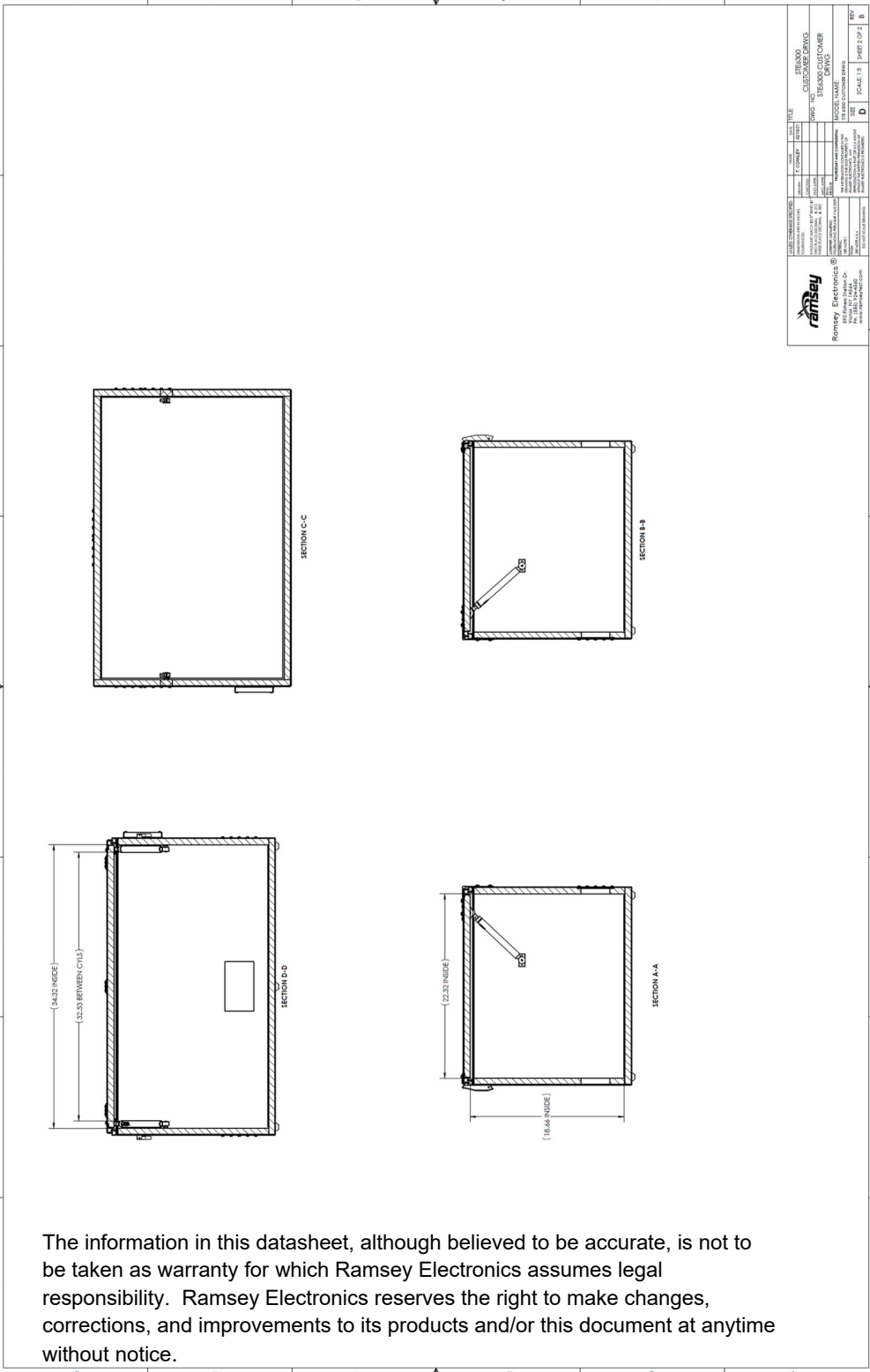
Solutions for the Wireless Industry





Concentric Technology Solutions Inc

Solutions for the Wireless Industry



		STE6300 CUSTOMER CENTER DRAWN BY: DAVID	
RAMSEY ELECTRONICS 10000 W. 10TH AVENUE DENVER, CO 80231 TEL: 303.535.1000 FAX: 303.535.1001 WWW.RAMSEYELECTRONICS.COM	DATE: 11/11/11 DRAWN: DAVID CHECKED: DAVID APPROVED: DAVID	SCALE: 1:1 SHEET 2 OF 2	REV: B